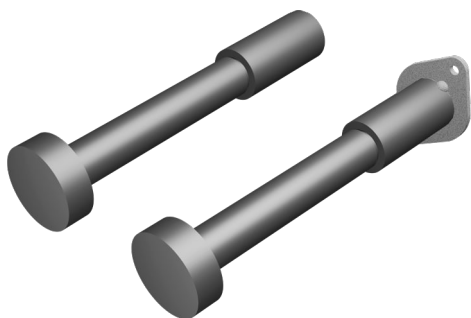


## BPI® BARSPLICER ANCHOR

### CONCRETE ANCHOR AND UNC THREADED COUPLER WITH OPTIONAL FLANGE

- **CONCRETE ANCHOR** – Meets concrete anchor requirements of ACI 318 Section 17.
- **HIGH STRENGTH CONNECTION** – Anchor coupler proof tested in-air to develop 125% x specified yield strength ( $f_y$ ) of ASTM A615 or A706 Grade 60 reinforcing bar per Type 1 requirements of ACI 318 Section 25. Capable of developing 100% x specified tensile strength ( $f_u$ ) of Grade 60 reinforcing bars per Type 2 requirements of ACI 318 Section 18 when connected to **Barsplicer XP** threaded bars provided by BPI®.
- **MASONRY APPLICATIONS** – Exceeds 125% x specified yield ( $f_y$ ) Grade 60 per ACI 530 / TMS 402.
- **PRE-FABRICATED THREADED BARS** – Anchor assemblies can be provided with lot controlled and tested ASTM A615 or A706 uncoated threaded deformed bars made by BPI® to your dimensions – straight, hooked 90° - 180°, single or double-ended and other configurations.
- **APPLICATIONS** – Minimum length anchors for normal weight concrete when a connection is required to threaded rebar, bolts or threaded rod with UNC threads.



The **BPI® Barsplicer Anchor** comes pre-assembled and ready to cast.

- Each assembly contains a threaded concrete anchor attached to a standard Barsplicer coupler with Unified National Coarse threads
- Assemblies can be provided with or without a form flange
- Available in several lengths for reinforcement bar sizes #4 through #6
- Use with BPI® threaded rebar, bolts or threaded rod with UNC threads



REBAR SIZE US [Metric]	PRODUCT CODE*		BARSPLICER THREAD SIZE	WEIGHT (lbs)	LENGTH L (in)	DIAMETER D (in)
	w/o FLANGE	w/ FLANGE				
#4 [13]	04A6UN	04A6UW	1/2 - 13 UNC	0.89	6	1 1/4
#4 [13]	04A8UN	04A8UW	1/2 - 13 UNC	1.09	8	1 1/4
#5 [16]	05A6UN	05A6UW	5/8 - 11 UNC	1.16	6	1 1/2
#5 [16]	05A8UN	05A8UW	5/8 - 11 UNC	1.41	8	1 1/2
#6 [19]	06A7UN	06A7UW	3/4 - 10 UNC	1.73	7	1 3/4
#6 [19]	06A8UN	06A8UW	3/4 - 10 UNC	1.89	8	1 3/4
#6 [19]	06A10UN	06A10UW	3/4 - 10 UNC	2.21	10	1 3/4

ALL DIMENSIONS ARE APPROXIMATE

**Unless otherwise specified, when BPI® provides pre-fabricated bars for use with the Barsplicer Anchor, bars shall be ASTM A615 Grade 60; bend diameters and standard hook dimensions shall be per ACI Detailing Manual SP-66, and; length tolerances shall be per the CRSI Manual of Standard Practice. Customer is responsible for notifying BPI® of any special tolerance restrictions, bar grade and/or strength requirements before placing order. All fabricated and/or in-process threaded bars are noncancelable and non-returnable.**

While the information contained in this document is believed to be accurate at the time of publication, BPI reserves the right to make changes, design modifications, corrections and other revisions as it sees fit, without notice. All products described herein are supplied in accordance with BPI's standard Terms and Conditions of Sale. This document is of a promotional nature only. Aspects of structural design, evaluation of product fitness for use, suitability or similar attributes are the responsibility of others.



**DOWNLOAD THE FREE BARSPLICE APP  
AND FOLLOW US ON SOCIAL MEDIA!**



Barsplice Products, Inc., 4900 Webster Street, Dayton OH 45414, USA  
Tel: 937-275-8700 • [www.barsplice.com](http://www.barsplice.com) • e-mail: [bar@barsplice.com](mailto:bar@barsplice.com)

Copyright © 2026, Barsplice Products, Inc., "BPI". All rights reserved.

